



String Quartet

a trilogy of macro, micro and under

i. a tree within a forest

ii. a forest within a tree

iii. down below

Orfeus Grammatikopoulos

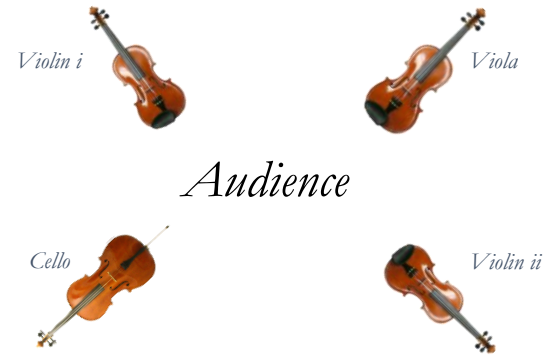
September-December 2019



Composer's Notes

General:

A surround set up is being proposed (not necessary)



The score is better to be played from the full score, for communication and synchronisation purposes

Concerning 1st part:

During the different accents on each voice the time is frozen (where the fermatas indicate a stoppage of time) until the “solo” player proceeds to the next beat.

Each accent must overlay the accompaniment of the other three voices no matter the total dynamics.

If during performance difficulties occur from the double stops with the harmonics, feel free to isolate only the upper note, for a little, so to relax your hand.

Except of the accents, all the other notes should be played with arco ordinario

Concerning 2nd part:

Musicians should be encouraged to try out different sounds (following the indications) and feel free to improvise upon the given instructions.

The time indications are approximate and could also be stretched or cut, according to the flow of the piece.

Graphical notation can be interpreted in different ways, again according to the feeling of the players and the continuity of the music.

Concerning 3rd part:

Freedom of interpretation and execution is being given to the players in a way to feel comfortable with the sheet music.

Again, the time indications are not exact and may vary.

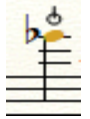


Dashed squared highlighted notes indicate an accent that stops the repetition of other voices (after the given time) and also works as a fermata giving time for the next beat

Notation



Col legno battuto: c.l.b.



Snap pizzicato



Col legno tratto: c.l.t.



Harmonic Glissando (upwards)



Non rhythmical tremolo



Sul ponticello squeak



Bow below the bridge



Bend. There are different types of bends during the piece. This is the basic symbol. Further notation is being used for the other types



Flautando



Thumb knock



*Air noise: molto flautando with muted string/
soft and vertical bowing on the bridge*



Slightly lower (an 8th or a 6th of a tone)



Slightly higher (an 8th or a 6th of a tone)

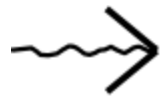


Quarter tone sharp/flat

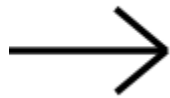
Repetition Indications



Brackets indicate the beginning and ending of a loop, the loop can be alternated



Curvy arrow means that the loop can stop anywhere



Regular arrow means that the loop stops at the end of the bracket



A square highlighted system indicates a looping section that does not alternate



A parenthesis indicates repetition in a free manner

String Quartet

i. a tree within a forest

Orfeus Grammatikopoulos

♩ ≈ 140

Violin I

Violin II

Viola

Cello

sfz pppp

sfz pppp

sfz pppp

Vln. I

Vln. II

Vla.

Vc.

sfz pppp

ppp

c.l.b.

2
21

Vln. I

Vln. II

Vla.

Vc.

c.l.b.

ppp

III/4
IV

30

Vln. I

Vln. II

Vla.

Vc.

c.l.t.

II
III

39

Vln. I

Vln. II

Vla.

Vc.

c.l.t.

48

Vln. I

Vln. II

Vla.

Vc.

pp

pp

pp

pp

c.l.t.

4
56

Vln. I

Vln. II

Vla.

Vc.

64

Vln. I

Vln. II

Vla.

Vc.

mp

mp

73

Vln. I

Vln. II

Vla.

Vc.

flautando

mp

mp

81

Vln. I

Vln. II

Vla.

Vc.

f

molto vibrato

IV

6
90

Vln. I

Vln. II

Vla.

Vc.

f

mf

molto vibrato

98

Vln. I

Vla.

106

Vln. I

Vla.

mf

sfz

Detailed description: This system contains measures 106 through 114. The Violin I part (top staff) features a melodic line with slurs and accents, starting with a *tr* (trill) marking. The Viola part (bottom staff) provides a rhythmic accompaniment with slurs and accents. Dynamics are marked as *mf* (mezzo-forte) and *sfz* (sforzando).

115

Vla.

thumb knock

Detailed description: This system shows measure 115 for the Viola. The staff contains a single note with a 'thumb knock' marking above it, indicating a specific performance technique.

117

Vla.

f

molto vibrato

Detailed description: This system contains measures 117 through 120 for the Viola. The staff shows a melodic line with slurs and accents, ending with a 'molto vibrato' marking and a dynamic of *f* (forte).

ii. a forest within a tree

20 sec. ----- |

40 sec. ----- |

begin alternating the pitch gradually until you reach this chord

♩ ≈ 112

Violin I

Violin II

Viola

Cello

pp

pp

pp

pp

sul tasto

sul tasto

sul tasto

sul tasto

♯

50 sec. -----|

sul tasto



sul pont.

Vln. I

quarter tone trill

Vln. II

quarter tone trill

Vla.

vibrato

Vc.

vibrato

15 sec. ----- | 5 sec. ----- | 30 sec. ----- |

In. I
In. II
Vla.
Vc.

7
6
5

glissando till the end of the strings

sul tasto

sf pp

move between quarter tones ad lib.

The image shows a musical score for four string instruments: Violin I, Violin II, Viola, and Violoncello. The score is divided into three time segments: 15 seconds, 5 seconds, and 30 seconds. In the 15-second segment, each instrument has a specific fingering indicated (7 for Violin I, 6 for Violin II, 5 for Viola, and b for Violoncello). A box highlights this section. In the 5-second segment, a box contains the instruction 'glissando till the end of the strings', and each instrument part shows a wavy line representing a glissando. In the 30-second segment, the instruction 'sul tasto' is present, and each instrument part shows a series of notes with dynamic markings *sf* and *pp*. A box above this section contains the instruction 'move between quarter tones ad lib.'. The notes in the 30-second segment are grouped in parentheses and include various accidentals.

$\text{♩} \approx 82$
Ordinario

Vln. I

Vln. II

Vla.

Vc.

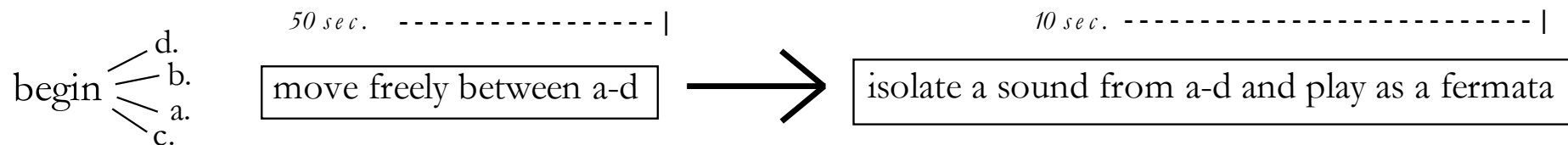
Ordinario

Ordinario

Ordinario

Ordinario

25sec. -----|



a:

muted snap pizzicato
low register, ad lib.

b:

muted strings bow tension
sul ponticello

c:

bow below the bridge
softly and arpeggiato

d:

harmonic glissando
on the 4th string

5 sec. 15 sec. -----|

10 sec. -----| 5 sec. -----| 20 sec. -----|

Musical score for Vln. I, Vln. II, Vla., and Vc. The score is divided into four sections by arrows. The first section (5 sec.) features Vln. I with a *sfz* dynamic and a box labeled "fast and ad lib." above it. The second section (10 sec.) features Vln. II with a *sfz* dynamic and a box labeled "fast and ad lib." above it. The third section (5 sec.) features Vla. with a *sfz* dynamic and a box labeled "fast and ad lib." above it. The fourth section (20 sec.) features Vc. with a *sfz* dynamic and a box labeled "fast and ad lib." above it. The first two sections are enclosed in a large box with numbers 5, 6, and 7 below the staves. The first section also has a circled number 8 above the staff.

$\text{♩} \approx 90$ on cue

Musical score for Vln. I, Vln. II, Vla., and Vc. This section shows a cue point marked with a circled number 90 and the text "on cue". The score consists of four staves, each with a circled number 90 above the first measure. The staves are labeled Vln. I, Vln. II, Vla., and Vc. from top to bottom.

15 sec. -----
slow and ad lib.

Vln. I c.l.b. *mp*

Vln. II c.l.b. *mp*

Vla. c.l.b. *mp*

Vc. c.l.b. *mp*

♩ ≈ 90

Vln. I

Vln. II *mp*

Vla. *mp*

Vc. *mp*

Vln. I

Vln. II

Vla.

Vc.

Vln. I

Vln. II

Vla.

Vc.

Vln. I ≈ 72

Vln. II *p*

Vla. *mf* *cresc.*

Vc. *mf*

Vln. I

Vln. II

Vla. *cresc.*

Vc. *cresc.*

Vln. I *let ring*

Vln. II *let ring*

Vla. *let ring*

Vc. *let ring*

Detailed description: This block contains the first system of a musical score for strings. It features four staves: Violin I, Violin II, Viola, and Cello. Each staff contains a melodic line with various note values and slurs. The instruction 'let ring' is written above the end of each staff. The key signature has one flat (Bb) and the time signature is 4/4.

on cue

Vln. I *ppp* secco *vibrato molto* *sfz*

Vln. II *ppp* secco *vibrato molto* *sfz*

Vla. *ppp* secco *vibrato molto* *sfz*

Vc. *ppp* secco *vibrato molto* *sfz*

Detailed description: This block contains the second system of the musical score. It features four staves: Violin I, Violin II, Viola, and Cello. Each staff contains sustained notes. A box labeled 'on cue' is positioned above the first measure of the Violin I staff. Performance instructions include 'ppp' (pianissimo), 'secco' (dry), 'vibrato molto' (very much vibrato), and 'sfz' (sforzando). The notes are sustained across the system, with some ending in a fermata.

iii. down below

Violin I ≈ 60 ric. c.l.b. f

Violin II f sul pont. \rightarrow sul tasto

Viola sfz

Cello f let ring

20 sec. -----|

on cue

sim.

mf/mp

mp/mf

ff sim.

ff

ff

ff let ring

pizz. muted string (c)

Vln. I ≈ 102 20 sec. -----| mp/mf

Vln. II ≈ 60 fff vibrating gliss.

Vla. ≈ 60 fff vibrating gliss.

Vc. mf/mp fff sul pont.

15 sec. -----| pp/p

p/pp

mp

♩ ≈ 42

♩ ≈ 72

30 sec. -----|

Vln. I ord. sul tasto *p/pp*

Vln. II sul pont. *mf*

Vla. sul tasto *mp*

Vc. sul pont. *mf*

louré

fff [Staff]

25 sec. -----|

Vln. I *ffff/ffff*

Vln. II *ffff/fff*

Vla. *fff/ffff*

Vc. *ffff/fff*

♩ ≈ 90

wait 15 sec. then begin

wait 15 sec. then begin

40 sec. -----|

sul pont. → sul tasto

rythmical vibrato

mf/mp rythmical vibrato

ff sul pont. [Staff]

mp/mf

40 sec. -----|

Vln. I *mp / mf*

Vln. II *mf / mp*

Vla. *pppp*

Vc. *pppp*

20 sec. -----|

rythmical vibrato

pppp

pppp

40 sec. -----|

pppp

pppp

This section of the score features four staves: Violin I, Violin II, Viola, and Violoncello. The Violin I and II parts are in treble clef with a key signature of one flat. The Viola and Violoncello parts are in bass clef with a key signature of two sharps. The Violin I part has a dynamic marking of *mp / mf* and a 40-second bracketed section. The Violin II part has a dynamic marking of *mf / mp* and a 40-second bracketed section. The Viola part has a dynamic marking of *pppp* and a 40-second bracketed section. The Violoncello part has a dynamic marking of *pppp* and a 40-second bracketed section. To the right, there are two staves with the instruction "rythmical vibrato" and a dynamic marking of *pppp*. The first of these staves has a 20-second bracketed section. Arrows indicate the flow of the music from the bracketed sections to the vibrato sections.

♩ ≈ 102

Vln. I *ff*

Vln. II *ff*

Vla. *ff*

Vc. *ff*

This section of the score features four staves: Violin I, Violin II, Viola, and Violoncello. All parts are in treble clef. The Violin I, Violin II, and Violoncello parts have a dynamic marking of *ff*. The Viola part has a dynamic marking of *ff* and a boxed-in first measure. The music consists of rhythmic patterns with accents and slurs. The Violoncello part has a key signature change to one flat in the second measure.

5 sec. --- | 50 sec. -----

Vln. I

Vln. II

Vla.

Vc.

pp / p

pp / p

p / pp

p / pp

bow below the bridge
softly and arpeggiato
tempo ad libitum

Vln. I

Vln. II

Vla.

Vc.

≈ 42

mf

mf

molto sul pont.

sfz

molto sul pont.

sfz

25 sec. -----|

Vln. I *mf*

Vln. II *mf* *molto accel.*

Vla. *sfz*

Vc. *sfz*

ric. c.l.b.

♩ ≈ 200

2 sec. ---|

8^{va} *fff*

8^{va} *fff*

fff

fff

30 sec. -----|

fff

fff

fff

fff

fff

♩ ≈ 60

molto rit.

Vln. I *mf*

Vln. II *mf* muted string (d)

Vla. *mf* sul tasto → sul pont.

Vc. *mf* let ring

on cue

sfz let ring

sfz let ring

sfz let ring

sfz let ring