

ΑΡΙΣΤΟΤΕΛΕΙΟ ΠΑΝΕΠΙΣΤΗΜΙΟ ΘΕΣΣΑΛΟΝΙΚΗΣ

ΣΧΟΛΗ ΚΑΛΩΝ ΤΕΧΝΩΝ

ΤΜΗΜΑ ΜΟΥΣΙΚΩΝ ΣΠΟΥΔΩΝ

-Μέρη ενός requiem-

για μικτή χορωδία και 8-κάναλη μαγνητοταινία

**Η αποδόμηση ενός παραδοσιακού Ρέκβιεμ με την χρήση
σύγχρονων τεχνικών και ηλεκτρονικών μέσων**

ΔΙΠΛΩΜΑΤΙΚΗ ΕΡΓΑΣΙΑ

ΣΥΝΘΕΣΗ

**του φοιτητή
Ορφέα Γραμματικόπουλου
ΑΕΜ: 2006**

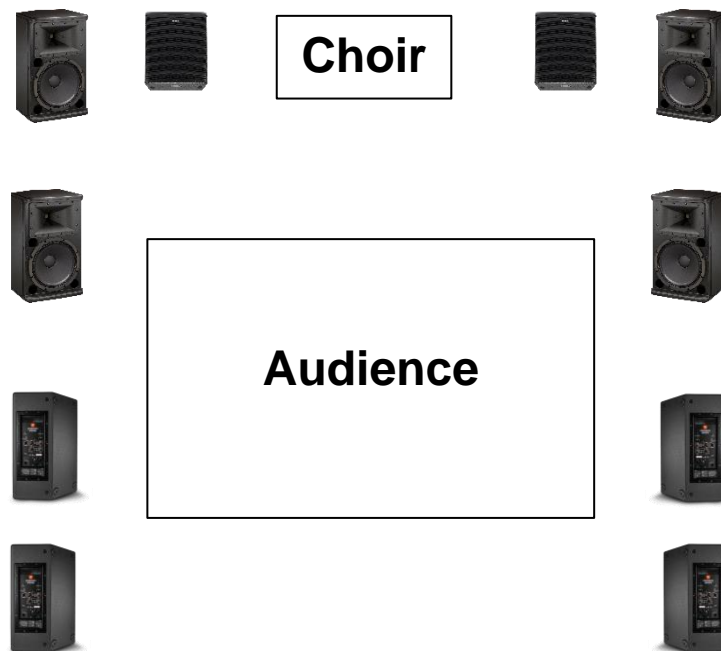
ΕΠΙΒΛΕΠΩΝ: Δημήτρης Παπαγεωργίου, αναπλ. καθηγητής

**ΘΕΣΣΑΛΟΝΙΚΗ
Σεπτέμβριος 2024**

Programme Notes

General:

The choir should be placed on stage and consist of at least 16 members (4 for each voice). The speakers are placed in a surround setup: 2 at the front, 2 at the rear (left and right), 2 in the middle left, 2 in the middle right, with 2 additional subwoofers (not included in the surround sound, amplifying the sub frequencies of the main mix). See the diagram below as a potential setup. It is suggested, though not mandatory, for the performance to take place in a large, reverberant room (reverb >5 seconds), preferably in a place that is or resembles a church.




The tape always starts at the beginning of each part and finishes at the end of it. There are three tapes, one for each part of the Requiem. In the score, wherever the staff is labeled "Tape," it means that there is sound coming out of the speakers. When the Tape staff is missing from the score, there is only the choir singing. For practical reasons, only the information necessary for the entrance and intonation (cues) of the choir is noted on the Tape staff. There are some extra elements that function as leads to help the choir and the conductor maintain synchronization with the tape.

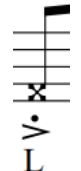
Notations

Kyrie Eleison:


Concerning the *body percussion*, it is performed in sync from all the members of the choir together. The correlation between the notes on the staff and the body parts is as follows:



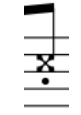
Right foot stomp



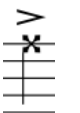
Left foot stomp



Hit on the thighs with both hands




Hit on the chest with either the left or right hand

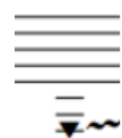


Clap

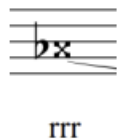
Dies Irae:



Higher possible note/
Scream

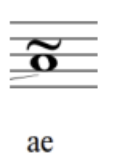


Lower possible note/
Growl



Rolling rrr

rrr



Slow, un-synched vibrato

ae

gradually introducing noise / vocal fry

Gradually closing the throat creating some sort of distorted vocal sound

like singing in reverse

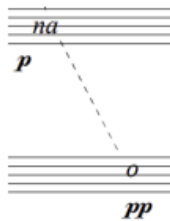
With a slight crescendo between the first and the second note. Trying to imitate the reverse effect.

Lux Aeterna:

The graphic depictions function as an indicative guide and shouldn't be followed strictly. They serve the role of suggestive notations. Some indications have been provided for the coordination of the choir members and the synchronization with the tape. In detail: the dotted lines indicate, depending on their placement, the sequence or coincidence of different events.

In detail:

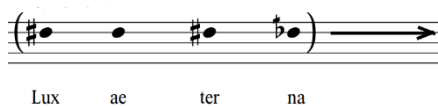
The dotted lines indicate, depending on their placement, the sequence or coincidence of different events.



One syllable follows the other according to the lines. As the phrase progresses and due to *accelerando* the syllables may occur in a different order.



The words begin together in pairs (S-T, A-B). In the continuation of the phrase, words can start phasing and be independent of their pairs.



Repetition of the highlighted phrase until further notice. Each syllable should have a long but undefined duration

Kyrie Eleison

Orfeus Grammatikopoulos

$\text{♩} = 120$

44

Soprano

Alto

Tenor

Bass

Tape

Intro [00:00 - 01:50] Cue

48

S

A

T

B

Tape

48

X4 (3rd round : subito p cresc. to fff)

S
mf cresc. who who who who ff who who who who who who who
A
sfp cresc. who who who who who who ff who who who who who who
T
sfp cresc. who who who who who who ff who who who who who who
B
mf cresc. who who who who ff who who who who who who

B. Perc. ff R L R L R L R L
Tape 52 8 10 8

S
who who who who who who who who who who who who who
A
who who who who who who who who who who who who who
T
who who who who who who who who who who who who who
B
who who who who who who who who who who who who who

B. Perc. R L R L R L R L R L R L R L
Tape 56 8 10 8 10 8 10 8

60

S
 who who who who who who who who how who where who how who where
subito p

A
 who who who who who who how who where who how who where who
subito p

T
 who who who who who who how who where who how who where who
subito p

B
 who who who who who who who how who where who how who where
subito p

B. Perc.
 R L R L R L R L

Tape
 60

64

S
 why he ha ha how who how who how who how who why he ha ha
crescendo *subito p* *crescendo*

A
 why he ha ha who where who where who where who where why he ha ha
crescendo *subito p* *crescendo*

T
 why he ha ha who where who where who where who where why he ha ha
crescendo *subito p* *crescendo*

B
 why he ha ha how who how who how who how who why he ha ha
crescendo *subito p* *crescendo*

68

S $\text{♩} = 120 \rightarrow \text{rallentando}$ $\text{♩} = 90 \dots \text{accelerando}$

who what who when who what who when who who who who

mf *crescendo* *ff* *crescendo* 2

A

what who when who what who when who who who who

ff *crescendo* 2

T

what who when who what who when who who who who

mf *crescendo* *ff* *crescendo* 2

B

who what who when who what who when who who who who

mf *crescendo* *ff* *crescendo* 2

Tape 68 $\frac{10}{8}$ $\frac{12}{8}$ $\frac{10}{8}$

73 $\text{♩} = 120$

S

A

T

B

Tape 73 Cue

76

S

A

T

B

Tape

80

S

A

T

B

Tape

mf Ky rie E lei son Kri - SteE - lei son Ky rie E lei son

mf Ky rie E lei son Kri - steE - lei son Ky rie E lei

84

S
Kri steE - lei son Ky rie E lei son Kri steE - lei son Ky rie E lei son
crescendo

A
son Kri steE - lei son Ky rie E lei son Kri steE - lei son Ky rie E lei
crescendo

T

B

88

S
Kri steE - lei son Ky rie E lei son Kri steE - lei son Ky rie E lei son
f

A
son Kri steE - lei son Ky rie E lei son Kri steE - lei son Ky rie E lei
f

T
Ky rie E lei son Kri steE - lei son Ky rie E
f

B

92

S Kri steE - lei son Ky rie E lei son Kri steE - lei son Ky rie E lei son *crescendo*

A son Kri steE - lei son Ky rie E lei son Kri steE - lei son Ky rie E lei *crescendo*

T lei son Kri steE - lei son Ky rie E lei son Kri steE - lei son Ky rie E *crescendo*

B

96

S Kri steE - lei son Ky rie E lei son Kri steE - lei son Ky rie E lei son *ff*

A son Kri steE - lei son Ky rie E lei son Kri steE - lei son Ky rie E lei *ff*

T lei son Kri steE - lei son Ky rie E lei son Kri steE - lei son Ky rie E *ff*

B Ky rie E lei son Kri *ff*

100

S Kri steE - lei son Ky rie E lei son Kri steE - lei son Ky rie E lei son

A son Kri steE - lei son Ky rie E lei son Kri steE - lei son Ky rie E lei

T lei son Kri steE - lei son Ky rie E lei son Kri steE - lei son Ky rie E

B ste E lei son Ky rie E lei son Kri

100

Tape *clap fades in* Cue

104

S Kri steE - lei son Ky rie E lei son Ky rie E lei son Kri steE - lei son
crescendo **fff** *furioso*

A son Kri steE - lei son Ky rie E lei Ky rie E lei son Kri steE lei son
crescendo **fff** *furioso*

T lei son Kri steE - lei son Ky rie E Ky rie E le i so on
crescendo **fff** *furioso*

B ste E lei son Ky rie Ky ri e Kri ste Ky ri e
crescendo **fff** *furioso*

104

Tape **fff** *furioso*

108

S Ky rie E lei son Kri__ steE - lei son Ky rie E lei son Kri__ steE - lei son

A Ky rie E lei son Kri__ steE lei son Ky rie E lei son Kri__ steE lei son

T 8 Kri ste E__ le i so on Ky rie E__ le i so on

B __ Kri ste Ky ri__ e Kri__ ste__ Ky ri e Kri__ ste Ky ri e

108

Tape

112

S Ky rie E lei son Kri__ steE - lei son Ky rie E lei son Kri__ steE - lei son

A Ky rie E lei son Kri__ steE lei son Ky rie E lei son Kri__ steE lei son

T 8 Kri ste E__ le i so on Ky rie E__ le i so on

B Kri ste Ky ri e__ Kri__ ste__ Ky ri e Kri__ ste Ky ri e__

112

Tape

116

S Ky rie E lei son Kri__ steE - lei son Ky rie E lei son Kri__ steE - lei son

A Ky rie E lei son Kri__ teE lei son Ky rie E lei son Kri__ steE lei son

T Kri ste E__ le i so on Ky rie E__ le i so on

B Kri ste Ky ri e Kri__ ste Ky ri e

Tape

116

120

S Ky rie E lei son Kri__ steE - lei son Ky rie E lei son Kri__ steE - lei son

A Ky ri E lei son Kri__ steE lei son Ky rie E lei son Kri__ steE lei son

T Kri ste E__ le i so on Ky rie E__ le i so on

B Kri ste Ky ri e Kri__ ste Ky ri e

Tape

120

124

S Ky rie E lei son Kri__ steE - lei son Ky rie E lei son Kri__ steE - lei son

A Ky rie E lei son Kri__ teE lei son Ky rie E lei son Kri__ steE lei son

T Kri ste E__ le i so on Ky rie E__ le i so on

B __ Kri ste Ky ri__ e Kri__ ste__ Ky ri e Kri__ ste Ky ri e

124

Tape

128

S Ky rie E lei son Kri__ steE - lei son *subito p* who will who who who will__

A Ky ri E lei son Kri__ steE lei son *subito p* who who who who will who

T Kri ste E__ le i so on *subito p* who who will__ who who will__

B Kri ste Ky ri e__ Kri__ ste__ *subito p* will who who will will who

128

Tape

132

S
who will who who will who will who will who who will

A
who who who who who who who who who

T
who who who will who who will who who will who who will

B
who will who who who will who who will who who will who will

136

S
who will who *crescendo* who will who will *sf* you *ff* *secco*

A
who who who who will *crescendo* who who will *sf* you *ff*

T
who who will who who will *crescendo* who will *sf* you *ff*

B
who will who who will who will who will *crescendo* *sf* you *ff*

B. Perc.
136 *ff* R L *ff* R

Tape
136 *ff* Eleison *ff*

Dies Irae

Orfeus Grammatikopoulos

♩ = 132
00:00 - 00:10

Soprano
ffff
Di *mf*

Alto
sfp
Di

Tenor
sfp
Di

Bass
mf
es

00:10 - 00:30

S
ffff *rrr* gradually morphing into ae *mp* *slow vibrato / unsynced*

A
ffff *rrr* gradually morphing into ae *mp* *slow vibrato / unsynced*

T
ffff *rrr* gradually morphing into ae *mp* *slow vibrato / unsynced*

B
ffff *rrr* gradually morphing into ae *mp* *slow vibrato / unsynced*

00:45 - 01:06

S *mf*
gradually introducing noise / vocal fry

A *mf*
gradually introducing noise / vocal fry

T *mf*
gradually introducing noise / vocal fry

B *mf*
gradually introducing noise / vocal fry

Tape radio stutter fade in

00:45 - 01:06

01:06 - 01:16

Tape radio stutter intensifies | chords and voices fade in

$\text{♩} = 132$

01:16 - ...

S like singing in reverse se iD ae ir
mf crescendo

A like singing in reverse ae ir se iD
mf crescendo

T like singing in reverse al li se iD
mf crescendo

B like singing in reverse al li se iD
mf crescendo

Tape

13

S
ae ir se - iD
mp *crescendo*

A
al li se iD
mp *crescendo*

T
ae ir se iD
mp *crescendo*

B
al li se iD
mp *crescendo*

Tape

22

S
se iD al
mf *crescendo* *f* *crescendo*

A
se iD al
mf *crescendo* *f* *crescendo*

T
se iD ae
mf *crescendo* *f* *crescendo*

B
se iD ae
mf *crescendo* *f* *crescendo*

Tape

28

S
li

A
li

T
ir

B
ir

Tape

6 6 6 2

4/4 6/4 4/4 4/4

38

S
Di es

A
Di es ir Di ae Di es

T
Di es ir ae

B
Di es ir ae Di es

ppp *crescendo*

Di es

Di es ir Di ae Di es

Di es ir ae

Di es ir ae Di es

ppp *crescendo*

44

S
ir ae _____ il la

A
il la Di _____ es
p *crescendo*

T
8
il lla Di es _____ ir _____ ae _____
p *crescendo*

B
il la Di es ir ae
p *crescendo*

44

Tape

stutter sound fades in and continues

50

S
Di es ir ae _____
mp *crescendo*

A
ir ae il la Di es ir ae
mf *crescendo*

T
8
_____ il _____ la Di es _____ ir _____ ae _____
mf *crescendo*

B
Di es il la Di es
mf *crescendo*

50

Tape

56

S
il la Di es ir ae

f *crescendo*

A
Di es il la Di es ir ae Di es il la

T
8
il la Di es ir ae

B
ir ae Di es il la

56

Tape

62

S
il la Di es

ff *crescendo*

A
Di es ir ae Di es il la Di es ir ae

ff *crescendo*

T
8
il la Di es ir ae

ff *crescendo*

B
Di es ir ae Di es il la Di es ir ae

62

ff *crescendo*

Tape

hat-like sounds fade in and continue

68

S
ir ar Di es ir ae Di es il la

A
Di es il la Di es ir ae Di es il la

T
8 il la Di es ir ae

B
Di es il la Di es ir ae Di es il la

68

Tape

While loops continue select one of the phrases below at a time of your choosing and perform it in an over dramatic way, as loud as possible, then join your voice and continue singing in the loop
Phrases may overlap and can be transposed by semitone down

74

S
es ir ae Di es il la

A
Di es ir ae Di es il la

T
8 il la

B
Di es ir ae Di es il la

74

Tape

Di es il la ir ae ac il la

Di es ir ae Di es il la

Di es il la ir ae

Di es ir ae il la il la ir ae

80

S *fff* *x3*
Di es ir ae Di es il la Di es ir ae

A *fff* *x3*
Di es ir ae Di es il la Di es ir ae

T *fff* *x3*
Di es ir ae Di es il la Di es ir ae

B *fff* *x3*
Di es ir ae Di es il la Di es ir ae

80

Tape

86

S Di es il la

A Di es il la

T Di es il la

B Di es il la

86

Tape

04:44 - 05:57

While the loops continue and intensify have a moment of "breakdown"
 You can scream, cry, yell, shout, swear, pray, be silent, express yourself in any way you feel at the moment
 Then you can choose to continue singing in the loop or not
 When the loop cycles finish or when you decide to stop, breathe heavily (do not force it, it should come organically from the intensity) and/or sigh, weep, mourn.
 It doesn't have to be audible

solo tape

Lux Aeterna

Orfeus Grammatikopoulos

phrase 1 [00:00 - 00:15]

Soprano
fos fos fos fos fos fos fos fos
whispering molto staccato accelerando independently of the other voices

Alto
fos fos fos fos fos fos fos fos
whispering molto staccato accelerando independently of the other voices

Tenor
fos fos fos fos fos fos
whispering molto staccato accelerando independently of the other voices

Bass
fos fos fos fos fos fos fos
whispering molto staccato accelerando independently of the other voices

cue
Tape — *breath*

S *fos fos fos fos fos fos fos fos fos fos fos* *1 second*
ritardando independently of the other voices

A *fos fos fos fos fos fos fos fos fos fos fos fos fos*
ritardando independently of the other voices

T *fos fos fos fos fos fos fos fos fos fos fos fos*
ritardando independently of the other voices

B *fos fos fos fos fos fos fos fos fos fos fos fos*
ritardando independently of the other voices

Tape —

phrase 2 [00:16 - 00:32]

Soprano (S): *a* (*mp*, random pitches), *è* (*ff*, alternate between long and short accented vowels), *na* (*ff*, accelerando dependent on the other voices), *o* (*f*, accelerando dependent on the other voices).

Alto (A): *o* (*mp*, random pitches), *a* (*mf*, alternate between long and short accented vowels), *è* (*fff*, accelerando dependent on the other voices), *na* (*pp*, accelerando dependent on the other voices).

Tenor (T): *è* (*f*, random pitches), *na* (*p*, alternate between long and short accented vowels), *o* (*f*, accelerando dependent on the other voices), *a* (*mp*, accelerando dependent on the other voices).

Bass (B): *na* (*mf*, random pitches), *o* (*pp*, alternate between long and short accented vowels), *a* (*f*, accelerando dependent on the other voices), *è* (*mf*, accelerando dependent on the other voices).

Tape: cue *growl*

Soprano (S): *a* (*mp*), *è* (*fff*), *na* (*mf*, ritardando dependent on the other voices), *o* (*ppp*), *a* (*mp*), 4 seconds.

Alto (A): *o* (*mp*), *a* (*mf*), *è* (*mp*, ritardando dependent on the other voices), *na* (*f*), *o* (*ff*), 4 seconds.

Tenor (T): *è* (*ff*), *na* (*mf*), *o* (*ppp*), *a* (*fff*, ritardando dependent on the other voices), *è* (*mf*), 4 seconds.

Bass (B): *na* (*ff*), *o* (*f*), *a* (*pp*, ritardando dependent on the other voices), *è* (*p*), *na* (*f*), 4 seconds.

Tape: 7 | 4 breaths


phrase 3 [00:36 - 01:22]

S *eónia eónia eónia anápafsi*
pp *calmly and steadily*
 words begin together in pairs
 and start phasing along the way

A *anápafsi anápafsi eónia anápafsi*
pp *calmly and steadily*
 words begin together in pairs
 and start phasing along the way

T *eónia eónia anápafsi eónia*
pp *calmly and steadily*
 words begin together in pairs
 and start phasing along the way

B *anápafsi anápafsi anápafsi eónia*
pp *calmly and steadily*
 words begin together in pairs
 and start phasing along the way

9 *cue*
 Tape 
 voice fade in

S *anápafsi eónia anápafsi anápafsi anápafsi eónia* 5 seconds
 words may overlap or happen at the sasme time
 between voices or between singers

A *eónia anápafsi eónia eónia anápafsi eónia*
 words may overlap or happen at the sasme time
 between voices or between singers

T *eónia anápafsi eónia anápafsi eónia anápafsi eónia*
 words may overlap or happen at the sasme time
 between voices or between singers

B *anápafsi eónia eónia anápafsi eónia eónia anápafsi*
 words may overlap or happen at the sasme time
 between voices or between singers

11

Tape 
 voices fade out

phrase 4 [01:27 - 02:14]

02:14 - 02:40

S

A

T

B

Select from the bank of sounds :
 sighing | coughing
 sounds of relief / question
 yawning | breathing sharply
 imitating the sounds of the electronics

¹³cue

Tape

breath

finish

atmosphere fades in

02:40 - 03:40

S

(*soprano 2*)
 Lux ae ter na
mp

voices fade in at their own time
 repeating the highlighted phrase

A

alto 2
 Lux ae ter na
mp

alto 1
 Lux ae ter na
mp

voices fade in at their own time
 repeating the highlighted phrase

T

B

17

Tape

drone sub fades in

03:40 - 05:40

S *soprano 1*
 (# • • # #) →
 Lux ae ter na
mp

A

T
 (# • # • # • # •) →
 Lux ae ter na
mp
*voices fade in at their own time
 repeating the highlighted phrase*

B
 (# • # • # • # •) →
 Lux ae ter na
mp
*voices fade in at their own time
 repeating the highlighted phrase*

21

Tape
 drone sub intensifies

While some voices keep repeating the phrase some other stop and whisper one of the phrases below. Then they go back to repeating the highlighted phrase.

- Lux aeterna luceat eis, Domine,
cum sanctis tuis in aeternam, quia pius es
- Requiem aeternam dona eis, Domine,
et lux perpetua luceat eis, quia pius es

05:40 - 06:40

S 1
 (# • # • # • # •)
 Lux ae ter na
ff

S 2
 (# • # • # • # •)
 Lux ae ter na
ff

A 1
 (# • # • # • # •)
 Lux ae ter na
ff

A 2
 (# • # • # • # •)
 Lux ae ter na
ff

T
 (# • # • # • # •)
 Lux ae ter na
ff

B
 (# • # • # • # •)
 Lux ae ter na
ff

Tape
 amen breaks fade in

Each voice should whispers at least once the whole text before starting to fade out (unsynced)
 While some voices fade out, some other voices start pronouncing the word "Amen" in the following ways:
 -Ahmen- | -Eymen- | -Ameen-
 in a calm manner / as if they are praying

06:40 - 08:00

08:00 - ...

S 1 *Ahmen/Ameen/Eymen...*
from calm to furious to mad *crescendo molto et accelerando* ***fff*** nn

S 2 *Eymen/Ameen/Ahmen...*
from calm to furious to mad *crescendo molto et accelerando* ***fff*** nn

A 1 *Ahmen/Eymen/Ameen...*
from calm to furious to mad *crescendo molto et accelerando* ***fff*** nn

A 2 *Ameen/Ahmen/Eymen...*
from calm to furious to mad *crescendo molto et accelerando* ***fff*** nn

T *Eymen/Ahmen/Ameen...*
from calm to furious to mad *crescendo molto et accelerando* ***fff*** nn

B *Ameen/Eymen/Ahmen...*
from calm to furious to mad *crescendo molto et accelerando* ***fff*** nn

3

Tape

amen breaks intensify

tape cuts abruptly