

Glykeria Koutoula

~F~arewell

for baritone saxophone

May 2013

Indications

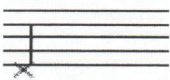
- *Transposed score.*
- *All the fingerings of the saxophone are only recommendations (D.Kientzy, Les sons multiples aux saxophones, 'Editions Salabert').
The player must respect the written tone colour and find fingerings which are the best adapted to his instrument.*



Accelerando



Diminuendo



Key-click



Slap tongue



Only air



Accelerando in tempo

~F~arewell

for baritone saxophone

Meditativo (♩ = 52)

Glykeria Koutoula

Baritone Sax.

15 *gliss.*

17

20

24 *sing*

28 $\text{♩} = 60$

29

30

32 *mf* *p sf* *p* *mf* *inhale*

34 *p* *mf* *p* *mf* *mf* *f* *mf* *f* *mp* *p*

36 *f* *mf* *p* *mf* *mf* *f*

37 *p* *inhale nervously* *exhale*

♩ = 52

39 *pp* < *p* *pp* < *p* *pp* < *p* *pp* < *p* *pp* < *p*

41 *pp* < *p* *pp* *♩ = 80*

44

pp *pp* *f* *pp*

46

mp *pp* *p* *pp* *mf*

48

pp *pp* *mf*

50

p *f* *p* *p* *mf* *mp*

52

p *mp* *f* *mp*

54

p *mp* *f*

56 *ff* *fff*

58 *fff*

♩ = 52

60 *p*

63 *p* *p*

(echo)

66

♩ = 60

68 *inhale* *sing* *p*

69 *sing*

inhale

71

73

$\text{♩} = 68$

74 *inhale*

ff sempre

76 *sing*

77

3

3

11 (=d)

78

3

6

79

$\text{♩} = 80$

inhale

5

6

5

fff *p* *mf* *fff* *p* *mf* *ff* *p* *mf* *pp*

81

ff *p* *mf* *p* *mp*

84

1

2

3 ^A

4

5

6

harmonic gliss.

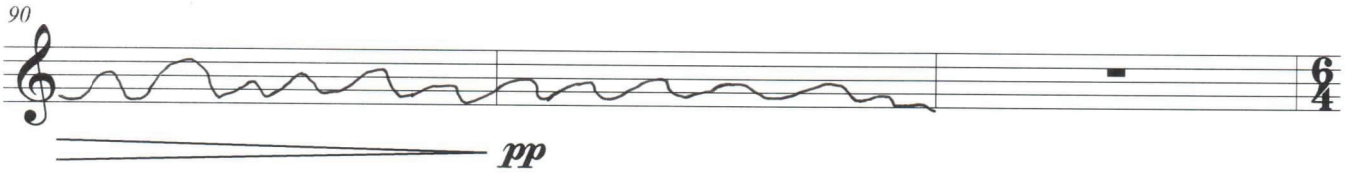
p *f*

87



mf

90



pp

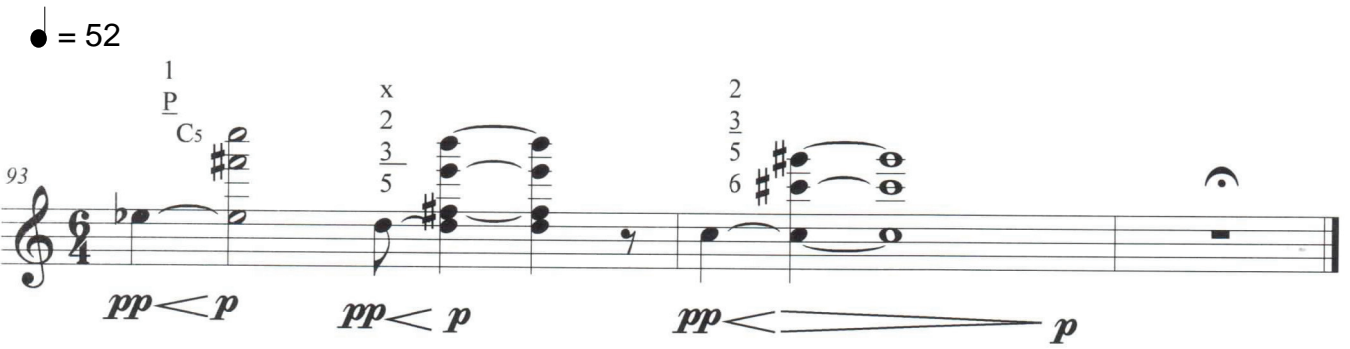
♩ = 52

1
P
C₅

x
2
3
5

2
3
5
6

93



pp < *p* *pp* < *p* *pp* < *p*